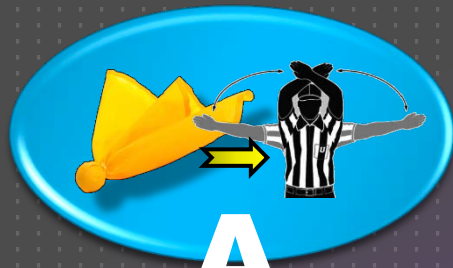


Multiple causes



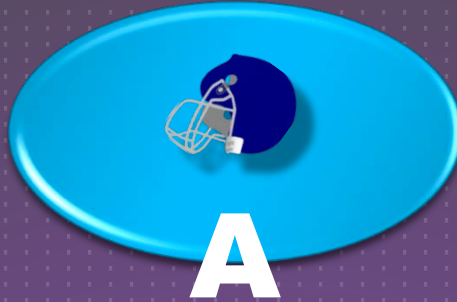
+



= **Runoff**



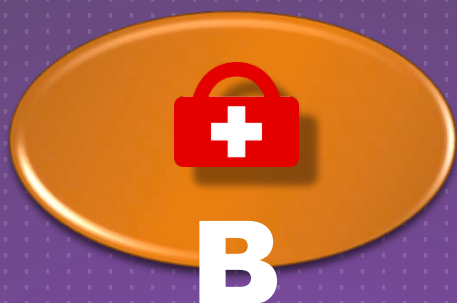
+



= **Runoff**

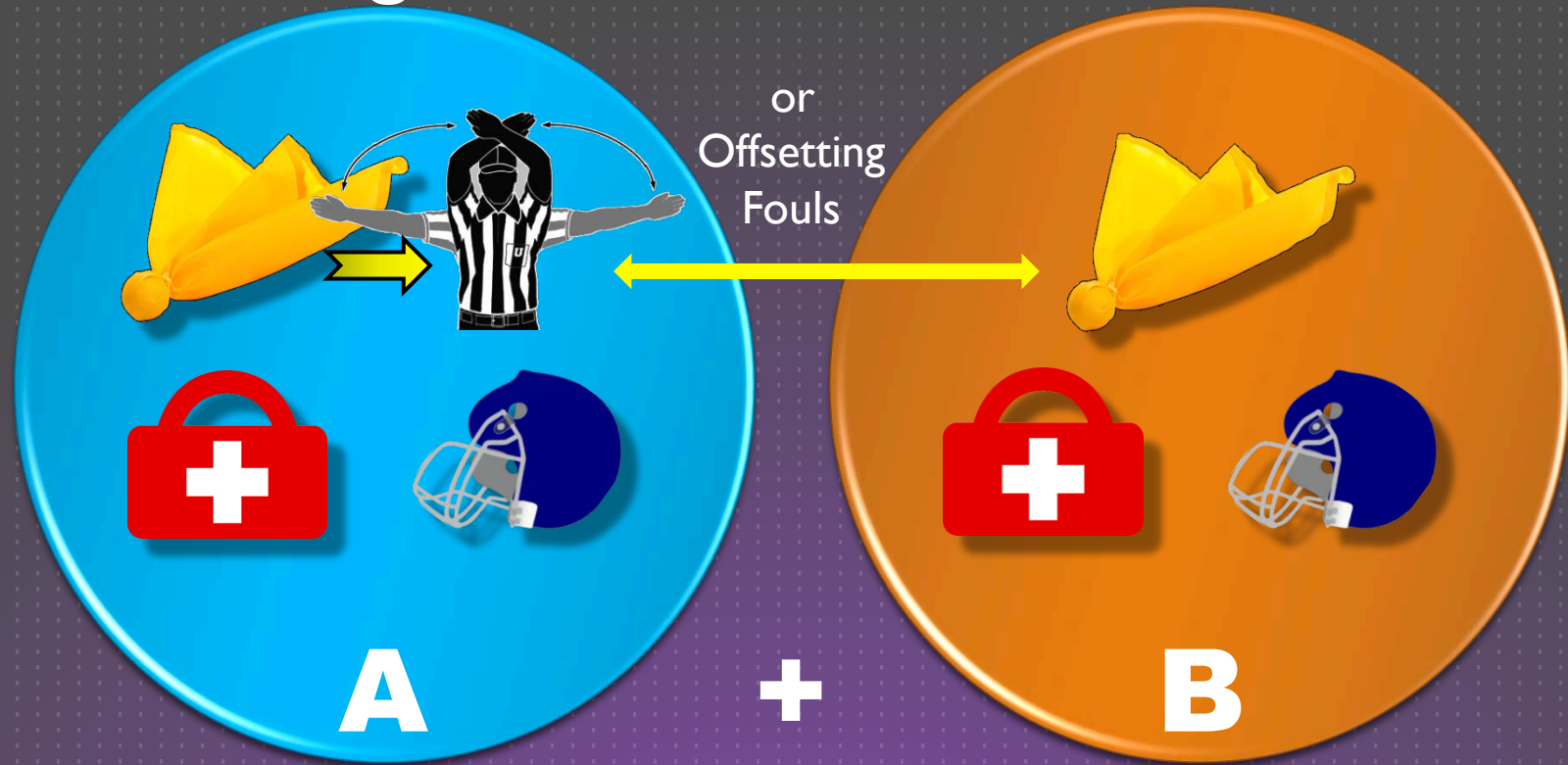


+



= **Runoff**

“Offsetting causes”



= No Runoff

Normal rules apply

CFO 2015

“10-Second Runoff: Play Situations” – play 7

“10-Second Runoff: Reinterpretation”

Play Clock Status

Play Clock



25



25
40



25
40

2015:
Always
Runoff
No runoff
First play of the game

Buy Back In?

Yes

Caused
by foul?

No

Play Clock Status – multiple causes

Play Clock



25



25

40



25

40

40 > 25

Game Clock Status

Runoff
Accepted:

Automatically
Wind

“Max time off”

Runoff
Declined:

Automatically on
Snap

“Min time off”

Runoff
Doesn't Apply:

**Usual
rules
apply**

And remember

0:59

CFO “Ten-Second Subtraction From The Game Clock,” 2011

Any Questions?

0=00